



Prof. Dr. T. J. Sawant
B.E. (Elec.) PGDM, Ph.D
Founder Secretary

JAYAWANT SHIKSHAN PRASARAK MANDAL'S

Bhivarabai Sawant Institute of Technology & Research

(Approved by AICTE New Delhi, DTE Mumbai & Affiliated to Savitribai Phule Pune University)

Gat No. 719/1 & 2, Wagholi, Pune-Nagar Road, Pune-412207

Ph : 020-067335108, 65217050, 67335100

Telefax : 020-67335100

Website : www.jspm.edu.in / www.bsiotr.org

EN 6311 / CEGP-013100



Dr. T.K. Nagaraj
ME. (Civil Engg), Ph.D (Civil Engg)
LMISTE, LMIGS, LMIRC
LMISRMTT, LMIE
Principal

6.2.2-The functioning of the institutional bodies is effective and efficient as visible from policies, administrative setup, appointment and service rules, procedures, etc.

Describe the Organogram of the Institution within a maximum 200 words

The important bodies which play important role are Governing Body, College Development Committee, IQAC, Academic Monitoring Cell, Training and Placement Cell, Research and Development Cell and other bodies/cells with teachers and students representation. The recruitment policies are well defined which are implemented by IQAC. Recruitment policy is as per the rules and regulations of SPPU. Local selection committee is constituted with subject experts by college. The candidates recommended by committee forwarded to university for Adhoc approval. This is for urgent need of college. Recruitment carried out as per roaster i.e. Approval by reservation cell of SPPU. Once roaster is approved advertisement in leading news paper is given and interview conducted by committee constituted by university. **Service rules** are transparent and benefits like Provident Fund, Group Insurance Scheme etc. are provided to employees. Institute has Women's grievance cell, student's grievance cell, Staff grievance cell and it resolves the grievances of students/staff /women if any. The self appraisal System for teaching and non-teaching staff which includes all aspects of API (Academic Performance Index) to evaluate and ensure that information on multiple activities is appropriately captured and considered for better appraisal .It is based on the Performance of faculties.



PRINCIPAL
J.S.P.M.'S Bhivarabai Sawant Institute of
Technology & Research
Wagholi, Pune- 412207



JAYAWANT SHIKSHAN PRASARAK MANDAL'S Bhivarabai Sawant Institute of Technology & Research

(Approved by AICTE New Delhi, DTE Mumbai & Affiliated to Savitribai Phule Pune University)

Gat No. 719/1 & 2, Wagholi, Pune-Nagar Road, Pune-412207

Ph : 020-067335108, 65217050, 67335100

Telefax : 020-67335100

Website : www.jspm.edu.in / www.bsiotr.org

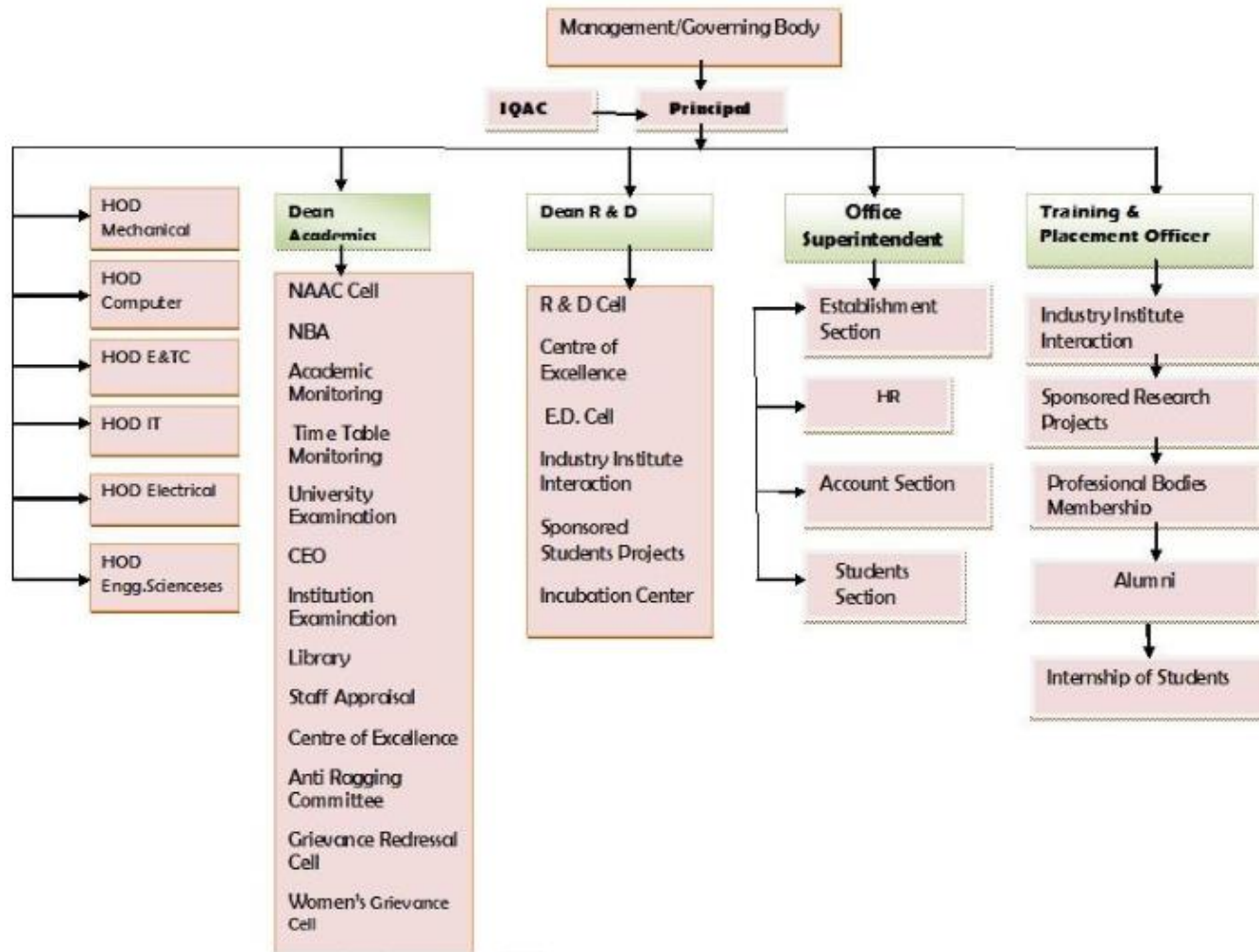
[EN 6311] / [CEGP-013100]



Prof. Dr. T. J. Sawant
B.E. (Elec.) PGDM, Ph.D
Founder Secretary

Dr. T.K. Nagaraj
ME. (Civil Engg), Ph.D (Civil Engg)
LMISTE, LMIGS, LMIRC
LMISRMTT, LMIE
Principal

Organisation Chart



PRINCIPAL
J.S.P.M.'S Bhivarabai Sawant Institute of
Technology & Research
Wagholi, Pune- 412207